



## FRIDAY

**7:00am**

### **Breakfast**

*Hotel restaurant , level 1*

**11:00am**

### **Registration opens**

*Conference foyer, level 2*

**12:00pm**

### **Lunch**

*Conference foyer, level 2*



**1:00pm**

### **Welcome session**

*Grand Central*



**2:00pm**

### **Keynote | Samuel Johnson**

*Grand Central*

**3:00pm**

### **Afternoon tea**

*Conference foyer, level 2*



**3:30pm**

### **Sparketype session | LL groups**

*Grand Central*

**4:30pm**

### **Free time**

**6:30pm**

### **Formal dinner and live music**

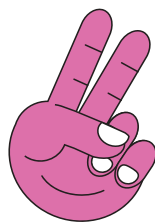
*Grand Central*



**10:00pm**

### **Event finish**





## SATURDAY

**7:00am**

### Breakfast

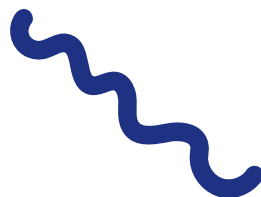
*Hotel restaurant , level 1*



**8:45am**

### Opening session

*Grand Central*



**9:00am**

### Workshop streams 1

#### Confidence in speaking with emotion and authenticity

*Sydney Improv*

*Grand Central*

#### Empathy, confidence and coming home to connection

*Kate McKillop*

*Town Hall*

#### Future leaders in action

*Canteen Education & Career Service (ECS)*

*Wynyard*

#### Standing tall through storytelling

*Young Adult Reconciliation Network (YARN)*

*St James*

#### The mechanics and dynamics of leadership

*Brett Humphreys – Leading Teams*

*Museum*

**10:30am**

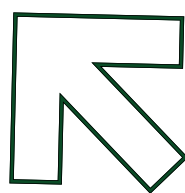
### Morning tea

*Conference foyer, level 2*

**10:50am**

### Workshop streams 2

*As above*



**12:20pm**

### Lunch

*Conference foyer, level 2*

**1:00pm**

### Workshop streams 3

*As above*

**2:30pm**

### Afternoon tea

*Conference foyer, level 2*



**3:00pm**

### Keynote | Hugo Toovey

*Grand Central*

**4:30pm**

### Free time

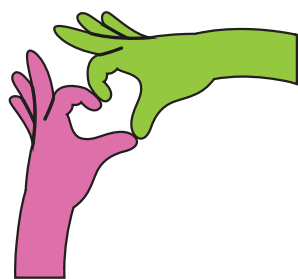
**6:30pm**

### Pizza and PJ party

*Conference foyer, level 2*

**10:00pm**

### Event finish



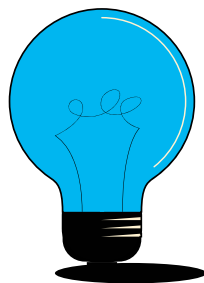


## SUNDAY

**7:00am**

**Breakfast**

*Hotel restaurant , level 1*



**8:00am**

**Hotel check-out**

*Bags to Martin Place*

**9:00am**

**MC's morning hype up**

*Grand Central*

**9:30am**

**Annual General Meeting**

*Grand Central*



**11:00am**

**Morning tea**

*Conference foyer, level 2*

**11:30am**

**Group session**

*Grand Central*

**12:30pm**

**Lunch**

*Conference foyer, level 2*



**1:15pm**

**Closing session**

*Grand Central*

**2:00pm**

**Buses to airport**

**2:30pm**

**Festival closes**

